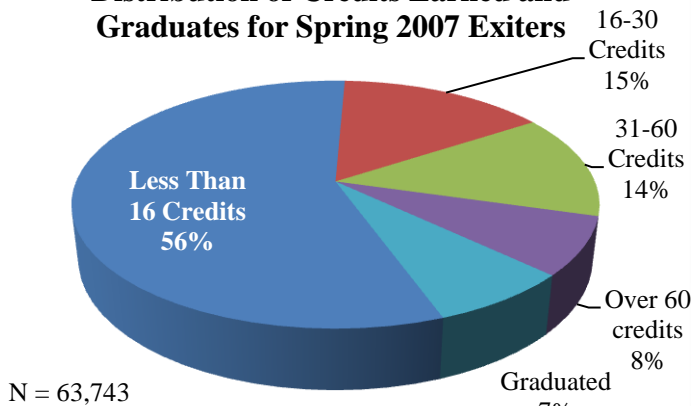


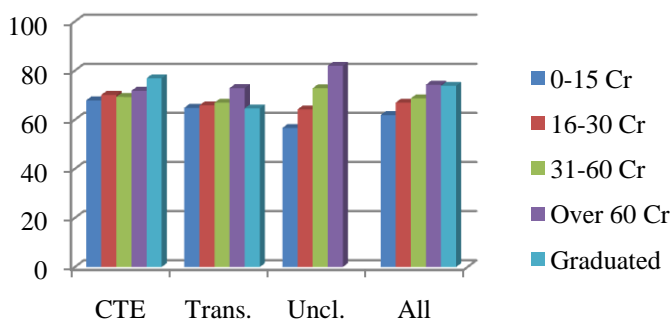
# STUDENT SUCCESS SNAPSHOT

## An Initial View of Student Success in the Workforce

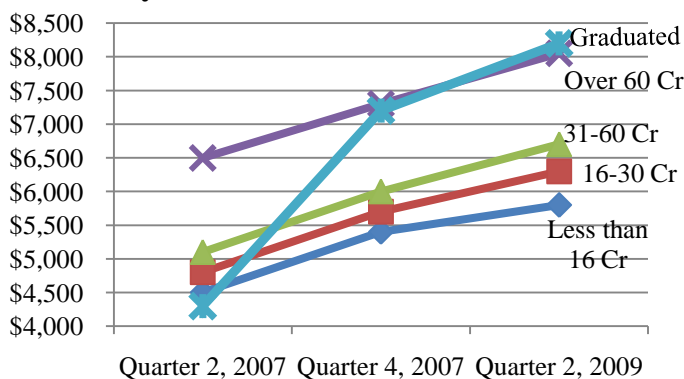
**Distribution of Credits Earned and Graduates for Spring 2007 Exiters**



**Rates of Employment in Six Months for Spring 2007 Exiters by Curriculum Type**



**Comparison of Median Quarterly Wages by Credits Earned and Graduation**



A skilled and knowledgeable workforce is vital to developing a vibrant economy. Virginia's Community Colleges serve a critical need by providing the education, training, and skills that students need to be successful in the workplace. This snapshot examines Unemployment Insurance (UI) wage records to explore job placement and wage information. While UI records have distinct limitations, some insights can be gained by tracking VCCS students' performance over time.

### Definitions

**Exiter:** VCCS student enrolled in spring 2007 and not enrolled in a two- or four-year institution in fall 2007.  
**UI data:** Wage data from VA, DC, and several nearby states: MD, NJ, OH, PA, and WV. Do not include self-employed, military, and federal employees.

### Highlights

- About two-thirds (65%) of exiters were earning wages six months later. Exiters were fairly evenly split among CTE (35%), transfer (32%), and unclassified (33%) students.
- System wide, median wages increased 23% in six months and increased an additional 10% from six months to two years from exiting.
- Graduates not only had the highest wage gain (67%) in six months, but they also were earning the highest median wage (\$8200) in two years when compared to non-graduates by credits earned.

### Reflections

In his January 2010 inaugural address, Governor McDonnell stated:

*...a high school degree is no longer the finish line in a global economy. We must create affordable new pathways to earning a college degree and make a commitment to confer 100,000 additional degrees over the next 15 years. We must make our community colleges national leaders in workforce development and career training.*

These UI data present a slice of information on how VCCS students perform in the workplace. Colleges

must work with students to align educational goals with awards, move students through to complete awards, and thereby infuse Virginia and the nation with a more highly credentialed workforce. Further analysis will help colleges meet the challenge of *Achieve 2015* to contribute to the economic and civic vitality of the commonwealth.

Rates of Quarterly Employment and Wages Earned for Spring 2007 Exiters  
In Six Months and Two Years and a Three Quarter Retention Measure

College	Exiters N	For Spring 2007 Exiters Rates of Quarterly Employment and Median Wages at 3 Points in Time						Exiters Who Were Employed in Q3 2007 and Retained in Employment Two Subsequent Quarters		
		Spring 2007 %	In Six Mos %	In Two Years %	Spring 2007 Median	In Six Mos Median	In Two Years Median	Emp. In Q3	% of Exiters	% Retained
Blue Ridge	1396	79.7	78.1	71.1	4300	5700	6200	1117	80.0	87.8
Central Virginia	1818	75.4	74.8	69.6	5000	5900	6300	1388	76.3	87.9
Dabney S. Lancaster	522	66.3	64.4	63.0	3200	5100	5000	346	66.3	83.0
Danville	1645	64.1	68.7	58.7	3300	4300	4700	1118	68.0	83.6
Eastern Shore	628	68.3	65.9	64.3	3000	3600	4400	439	69.9	80.0
Germanna	1864	70.6	69.5	62.6	4300	5250	6100	1287	69.0	82.9
J. Sargeant Reynolds	4650	75.5	74.4	67.3	5600	6500	6900	3531	75.9	87.7
John Tyler	2606	74.8	73.2	66.2	4500	5600	6000	1968	75.5	85.5
Lord Fairfax	2136	66.8	64.8	58.5	4100	5300	5800	1455	68.1	82.3
Mountain Empire	1126	64.6	64.5	60.2	4100	4900	5600	709	63.0	84.2
New River	1719	72.8	75.9	66.7	3600	5400	5700	1328	77.3	86.9
Northern Virginia	15585	59.9	57.4	50.4	6600	7600	8500	9316	59.8	83.5
Patrick Henry	1066	70.8	70.3	58.4	3700	4800	5000	770	72.2	83.8
Paul D. Camp	694	66.0	64.1	60.4	3700	4500	5200	467	67.3	83.9
Piedmont Virginia	1741	69.4	67.6	61.1	4700	5900	6300	1225	70.4	85.1
Rappahannock	1052	65.0	64.4	63.0	3300	4300	4700	713	67.8	82.5
Southside Virginia	2339	61.3	62.9	58.2	3600	4500	5200	1480	63.3	84.5
Southwest Virginia	2002	60.9	61.6	57.5	4100	5200	6000	1250	62.4	83.4
Thomas Nelson	3571	70.9	67.5	60.4	4400	5500	5900	2567	71.9	83.2
Tidewater	10417	64.9	62.4	55.0	4700	5500	6200	6640	63.7	85.2
Virginia Highlands	793	59.4	62.2	55.4	2900	4200	4900	499	62.9	82.0
Virginia Western	3167	75.4	73.5	67.1	5700	6700	7150	2406	76.0	86.9
Wytheville	1206	68.2	70.2	64.8	3900	5000	5300	867	71.9	85.5
System*	63743	66.8	65.4	58.7	4800	5900	6500	42886	67.3	84.7

\*Unduplicated headcount, students attending more than one college in fall or spring were assigned to college where highest number of college credits were earned. If equal numbers of credits were earned at multiple colleges, those colleges were arranged in alphabetical order and the student was assigned to the last college.

**How Were Data Generated?**

VEE student, course, and class files were used to determine demographic and enrollment data. Courses with missing grades, incompletes, or audits were eliminated from calculations. Graduate files were used to determine graduation information. National Student Clearinghouse data were used to determine enrollment in higher education. UI wage data from the Virginia Employment Commission were matched to VCCS student files to provide employment rates and wage calculations.

**For More Information**

Visit <http://www.vccs.edu/studentsuccess> to learn more about student success.